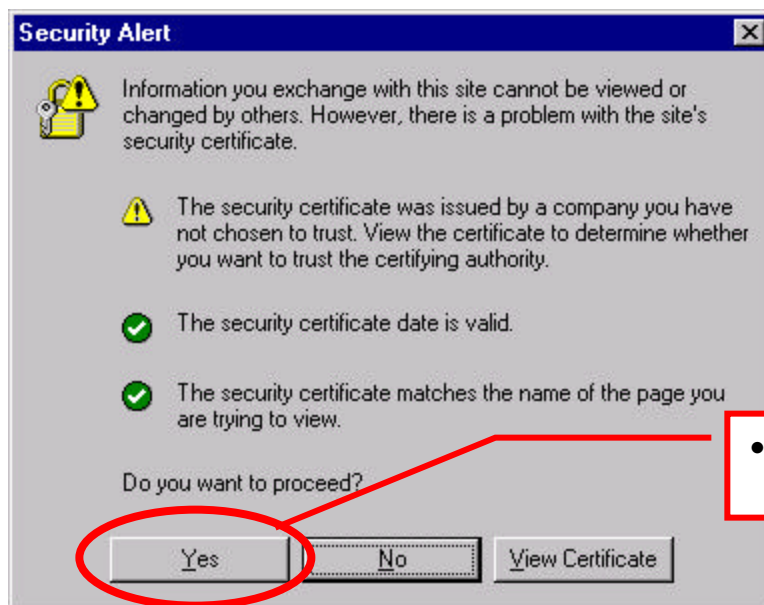


Instructions for Importing the DoD CA PKI Root Certificate Authorities Certificates into Internet Explorer

Internet Explorer does not list the DoD Medium Assurance and Class 3 Root Certificate Authorities (CA) among its list of Intermediate and Trusted Root CAs. Therefore, when a user accesses a DoD web site with a DoD PKI server certificate, he receives a message stating that the security certificate was issued by a company he has not chosen to trust, and when he receives a digitally signed email message from a sender whose certificate was issued by the DoD Medium Assurance or Class 3 Root CAs, he receives a message that the digital signature on this message is invalid because the certificate with this message is not trusted.

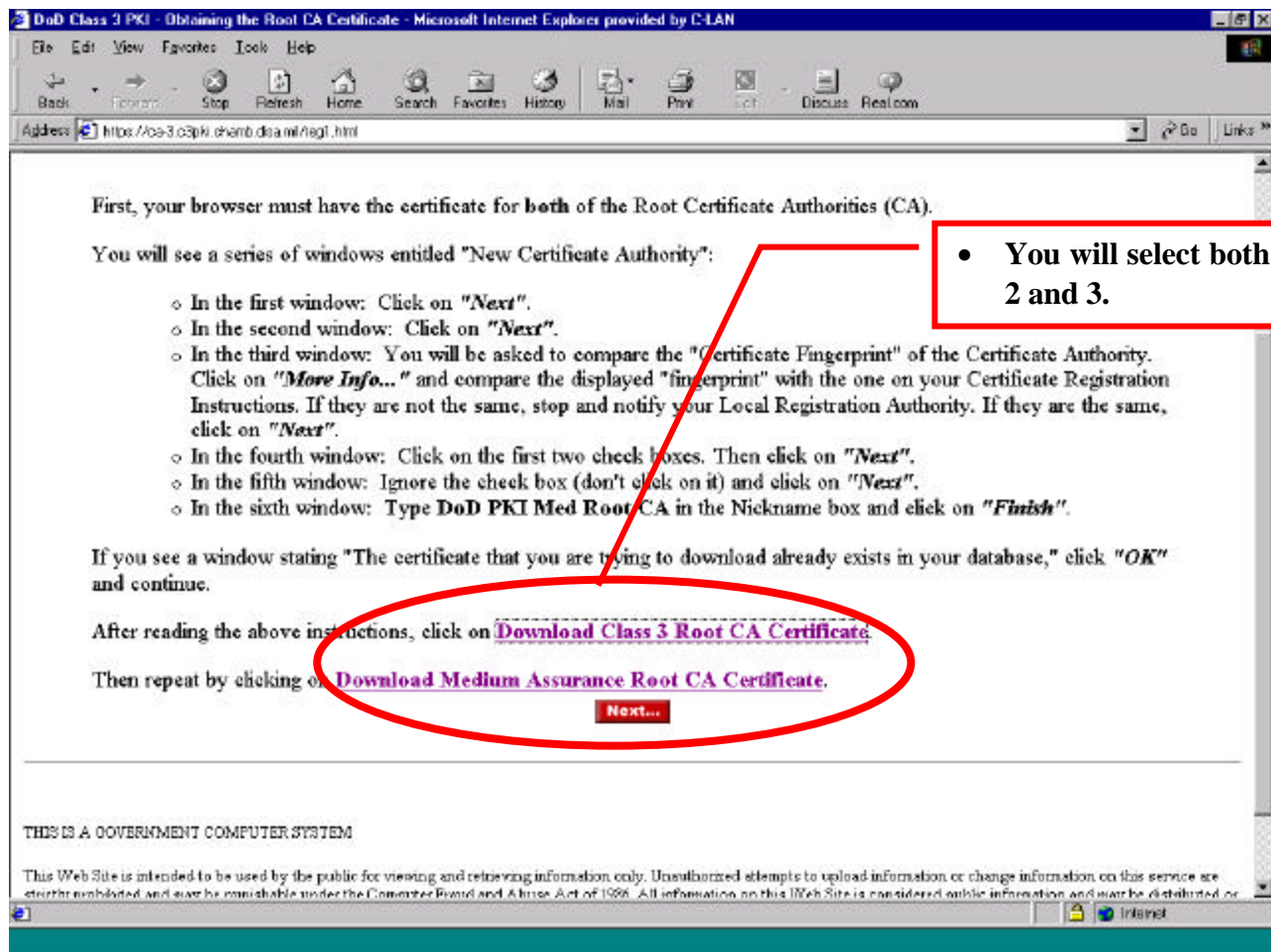
In order to prevent these messages from occurring, the user must import the DoD Root CA Certificates into the Trusted Root and Intermediate CA stores of Internet Explorer. Although only one of the DoD Root CAs issued the server and email certificates, the user might as well download both the Class 3 Root CA and Medium Assurance Root CA certificates.

1. In Internet Explorer, go to <http://dodpki.c3pki.chamb.disa.mil/rootca.html>. If you have never done this before you will get a security alert first.



- Select "Yes" to continue

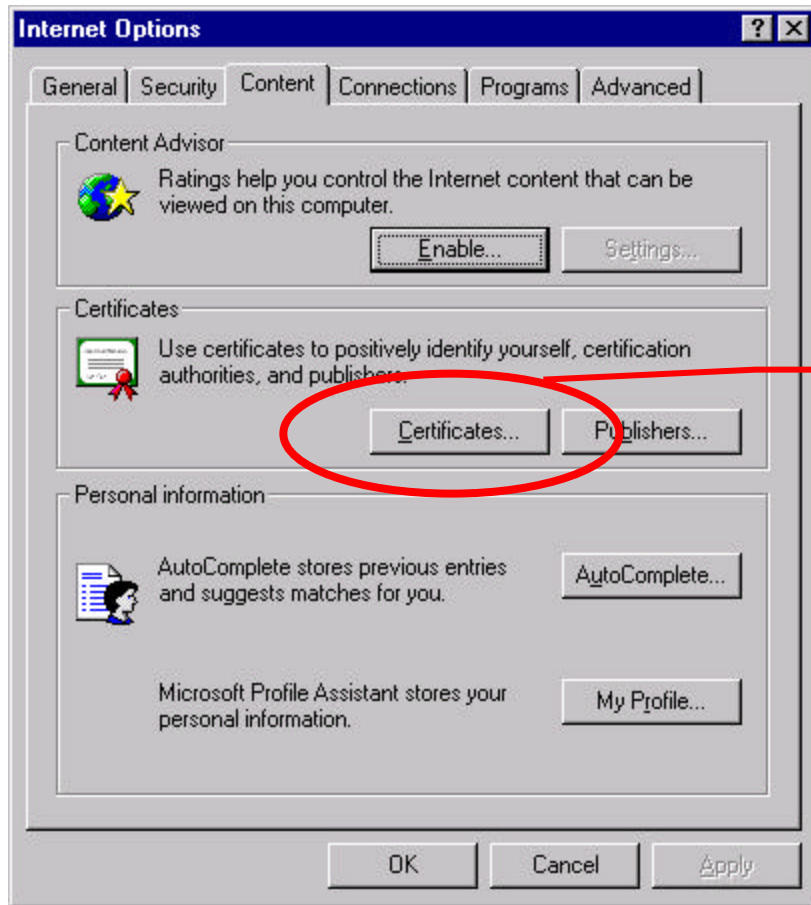
2. Near the bottom of the screen, click on "Download DoD Class 3 Root CA Certificate."



- You will select both in steps 2 and 3.

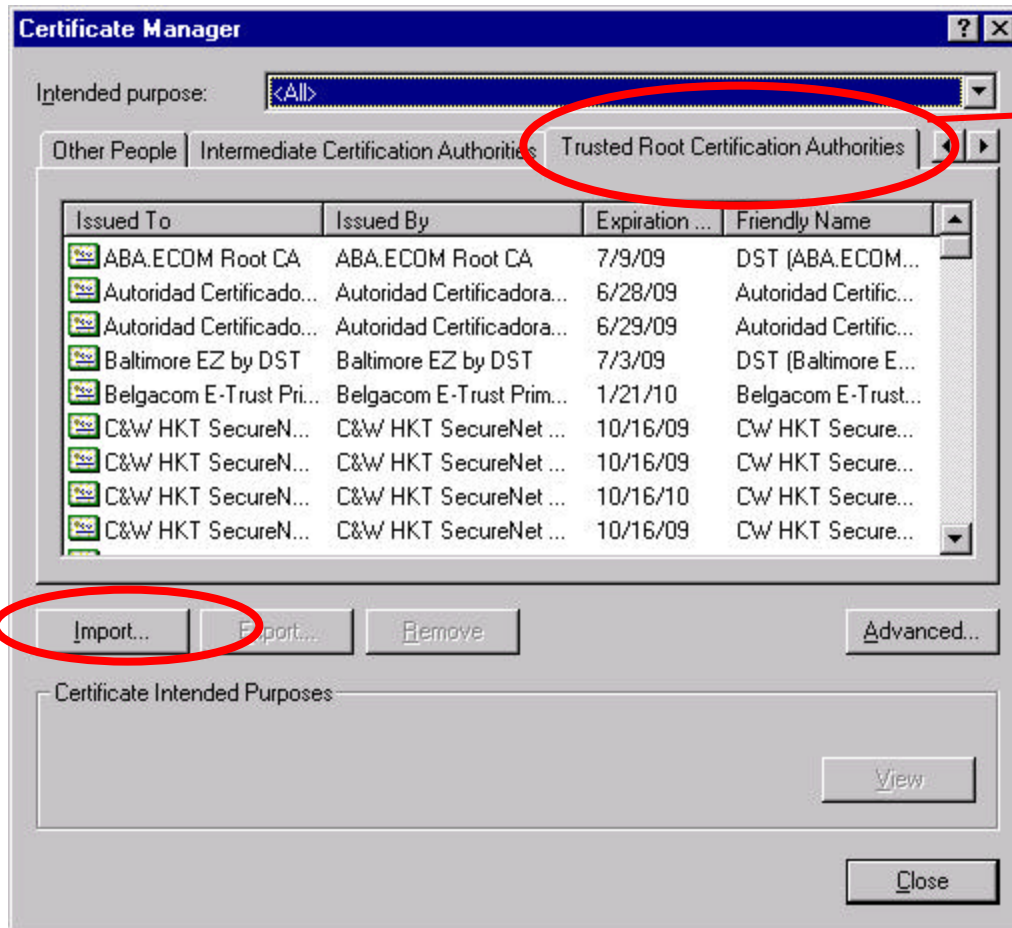
3. Select "Save this file to disk" and click on OK. The name of the file will be "dodroot.cac." After the download is complete, click on Download Medium Assurance Root CA Certificate and repeat, saving the file "dodrootmed.cac."

4. After downloading both certificates to a file, from the Tools pull-down menu, select Internet Options, and then select the Content tab. In the Certificates section, select the Certificates... button to display the Certificate Manager window.



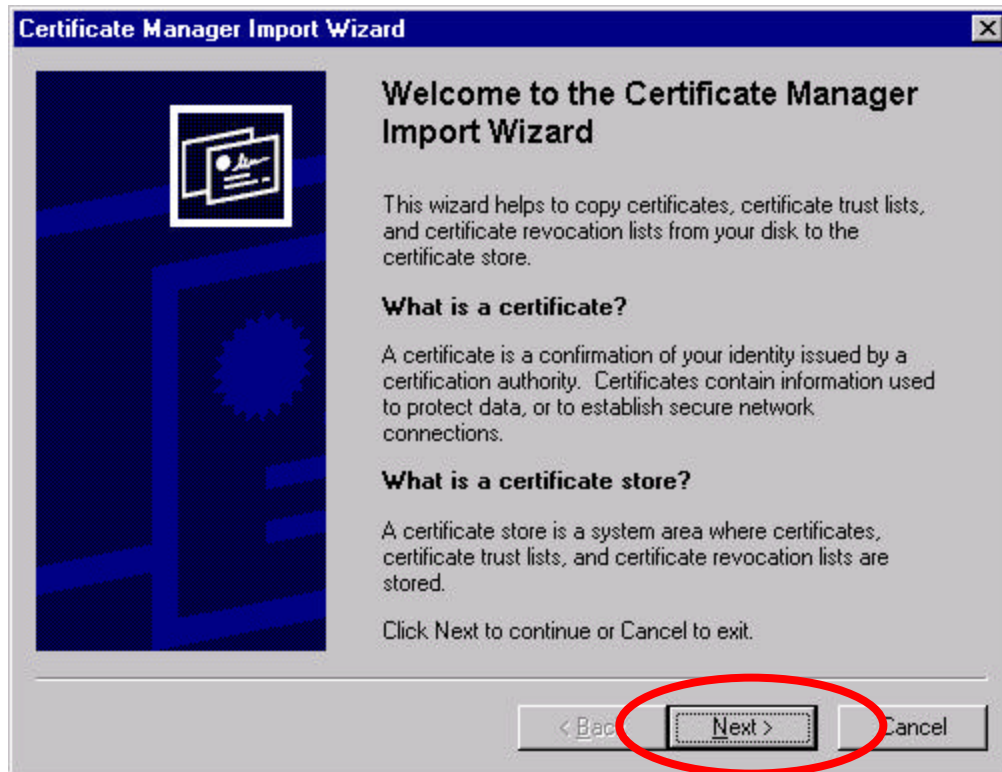
- **Select Certificates in the Content tab.**

5. Select the Trusted Root Certification Authorities tab, and then select the Import... button.

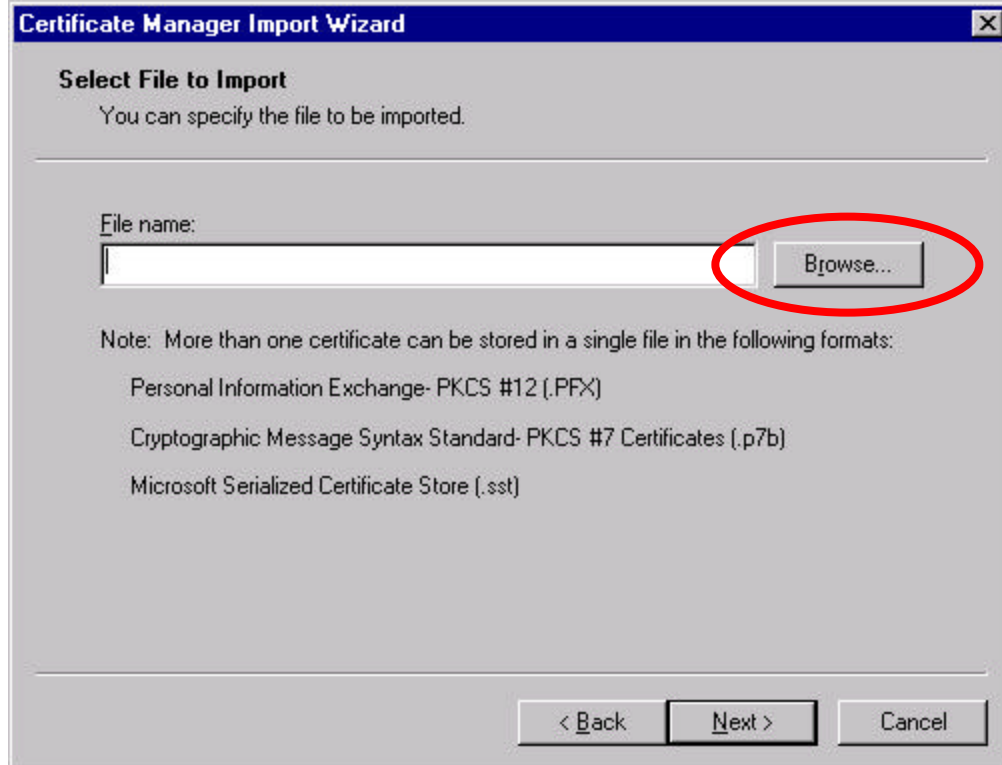


- Select Certif tab fi

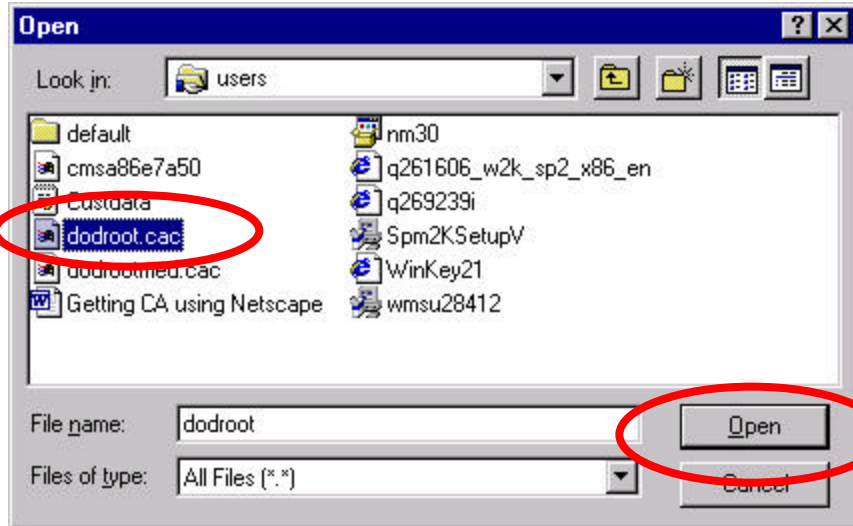
6. When the Certificate Manager Import Wizard displays, read the information, and then select the Next > button.



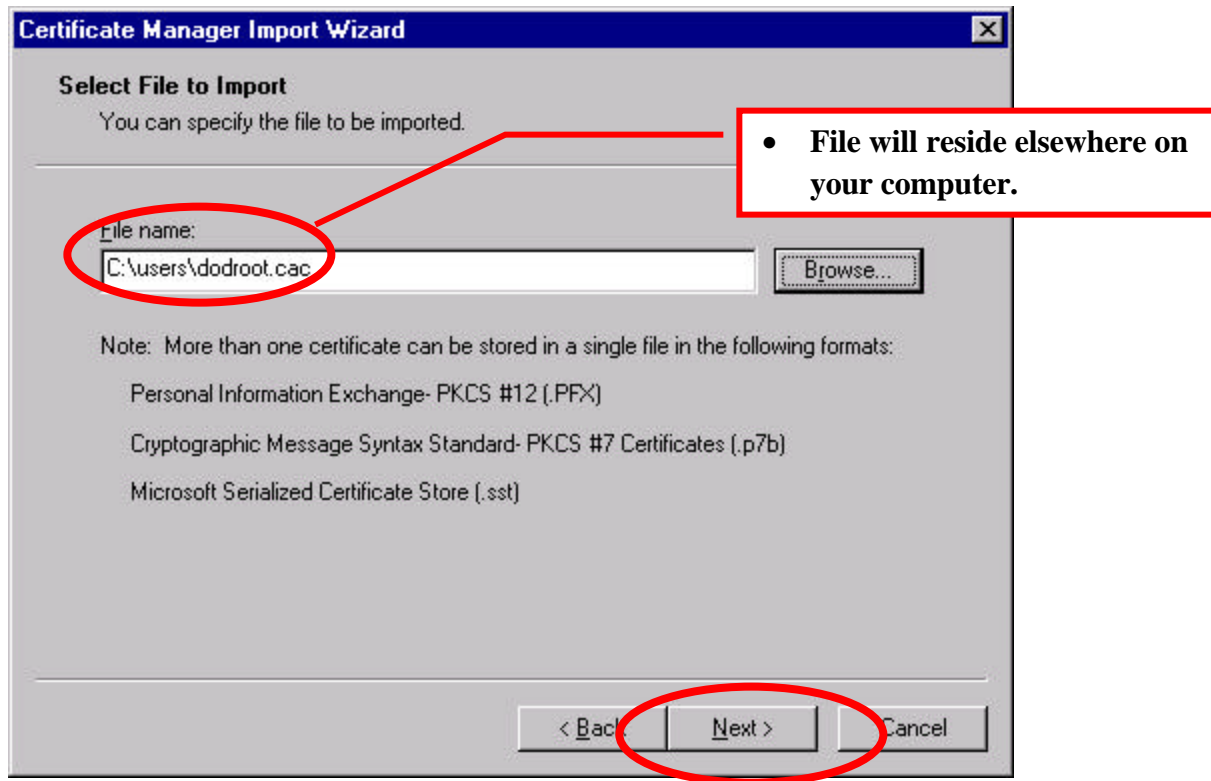
When the following window displays, use the Browse button to find the DoD Root CA certificate you just downloaded.



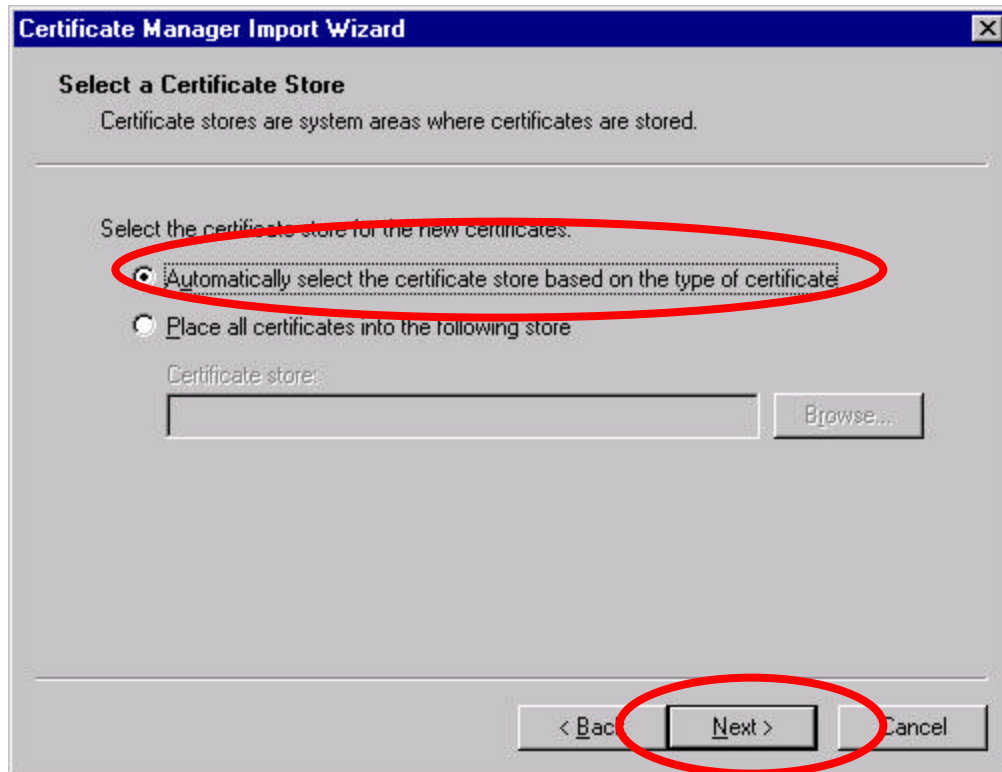
You may need to change the file type to "All files (*.*)" to find dodroot.cac. Select Open.



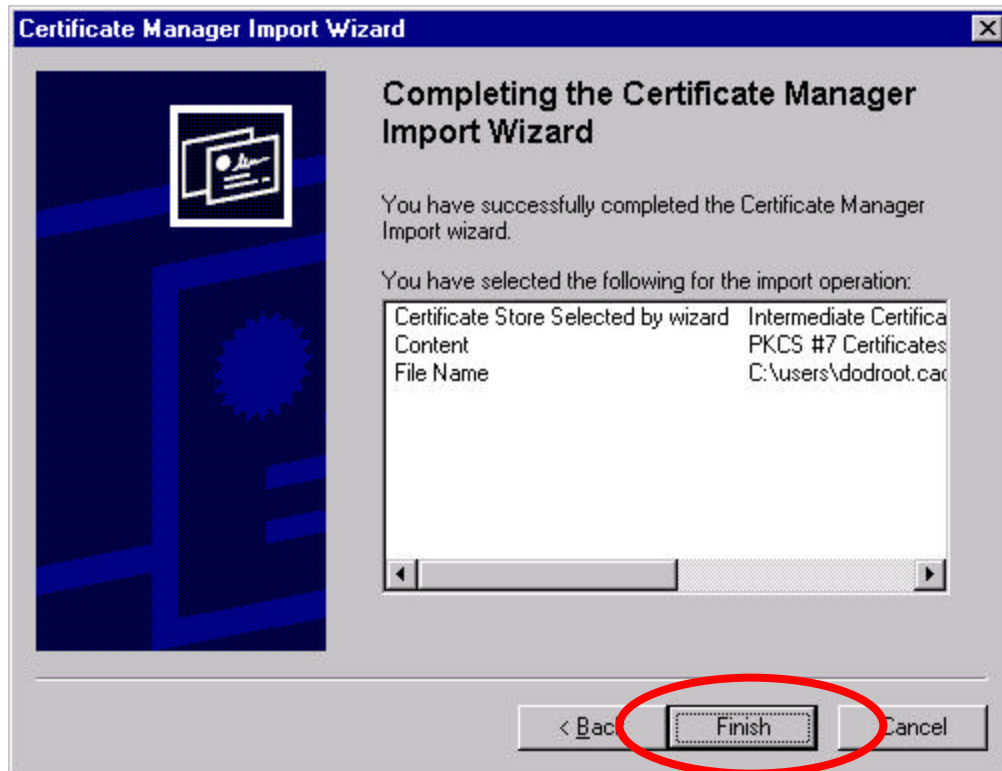
When the file displays in the File name: field, select Next > to continue.



7. Select the "Automatically select the certificate store based on the type of certificate" radio button, and then select Next >.

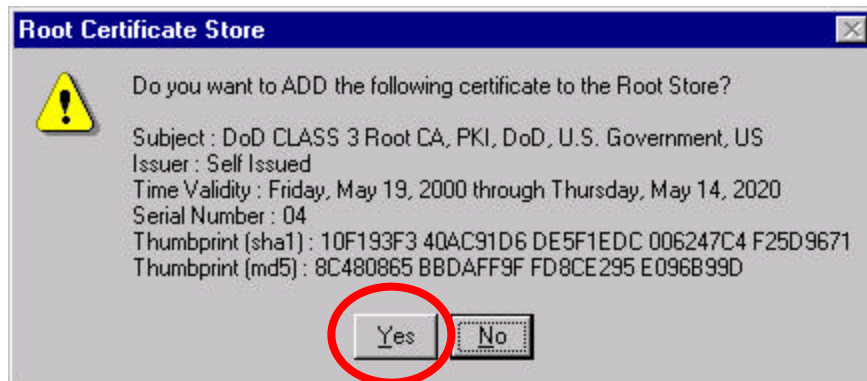


When the Certificate Manager Import Wizard window appears, select Finish to complete the Wizard.



After selecting Finish, a dialog box will pop up asking, "Do you want to Add the following

certificate to the Root Store?" Select Yes to add the certificates to the Root store. Select OK to confirm that the import was successful.



8. Repeat steps 5 -7 for the other DoD Root CA certificate.

9. You should now see the DoD Medium Assurance and Class 3 Root CAs listed in the Intermediate and Trusted Root CA stores. Close Internet Explorer.

