

Map 1

PRINCE WILLIAM COUNTY

Historic Sensitivity Areas & Designated Cultural Resources DRAFT

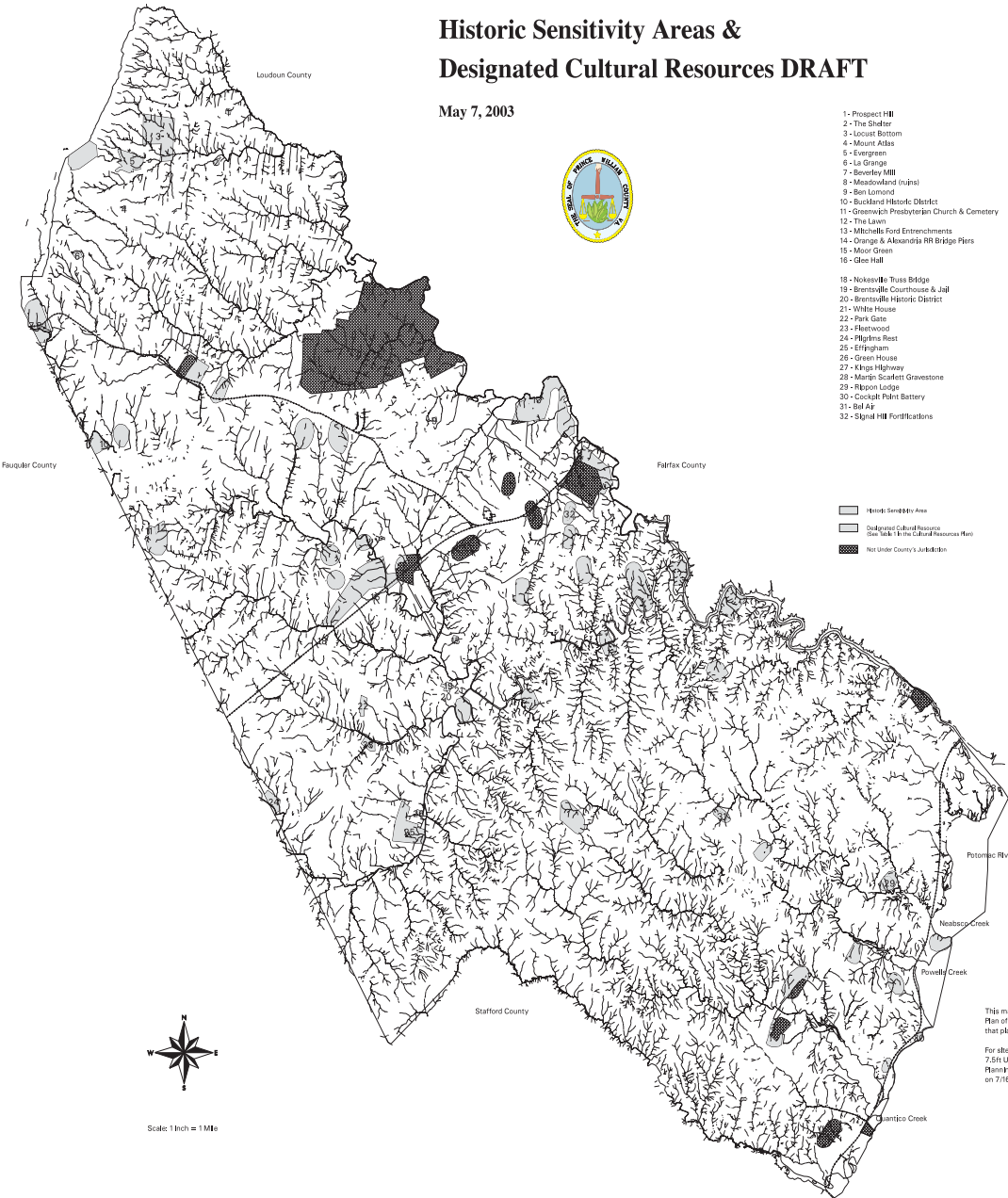
May 7, 2003



- 1 - Prospect Hill
- 2 - The Shelter
- 3 - Locust Bottom
- 4 - Mount Atlas
- 5 - Evergreen
- 6 - La Grange
- 7 - Beverley Hill
- 8 - Meadowland (ruins)
- 9 - Ben Lomond
- 10 - Buckland Historic District
- 11 - Greenwich Presbyterian Church & Cemetery
- 12 - The Lawn
- 13 - Mitchell's Ford Entrenchments
- 14 - Orange & Alexandria RR Bridge Piers
- 15 - Moss Green
- 16 - Glebe Hall

- 18 - Nokesville Truss Bridge
- 19 - Brentsville Courthouse & Jail
- 20 - Brentsville Historic District
- 21 - White House
- 22 - Park Gate
- 23 - Flertwood
- 24 - Riptime Bend
- 25 - Erifingham
- 26 - Green House
- 27 - Kings Highway
- 28 - Marj'n Scaffert Gravestone
- 29 - Pilson Lodge
- 30 - Coastal Train Battery
- 31 - Bell A/F
- 32 - Signal Hill Fortifications

-  Historic Sensitivity Area
-  Designated Cultural Resource
-  Site Under the Cultural Resources Here
-  Not Under County's Jurisdiction



Scale: 1 inch = 1 Mile

This map illustrates, in part, the Cultural Resources Plan of the 2003 Comprehensive Plan. Please refer to that plan for a discussion of Historic Sensitivity Areas.

For site-specific information, please consult the 7.5m USGS topographic maps on file in the Planning Office. This map was amended by the BOCS on 7/16/91, Resolution #91-648.