
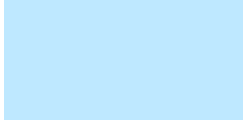


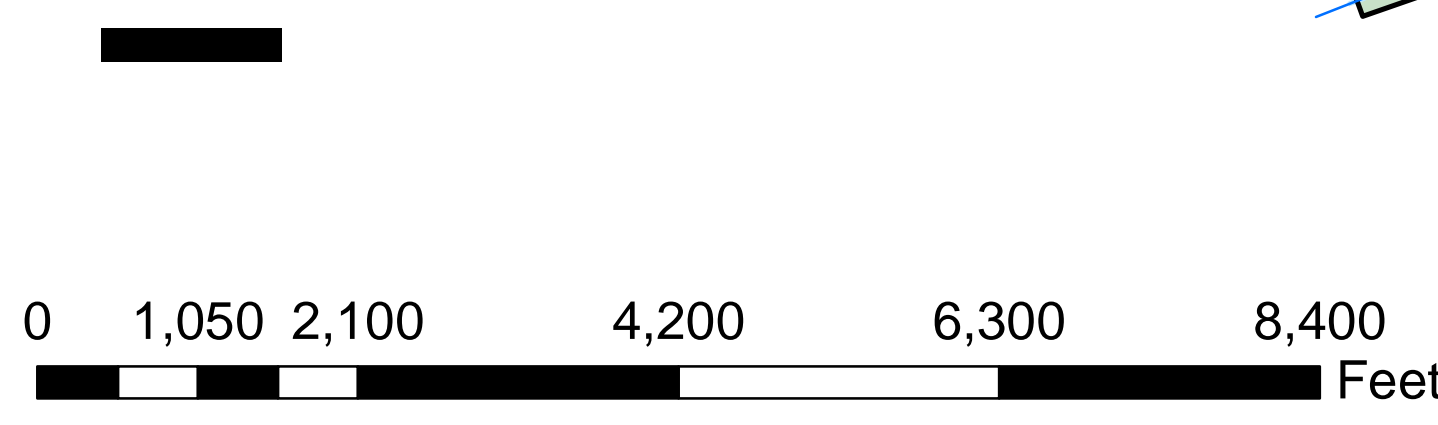
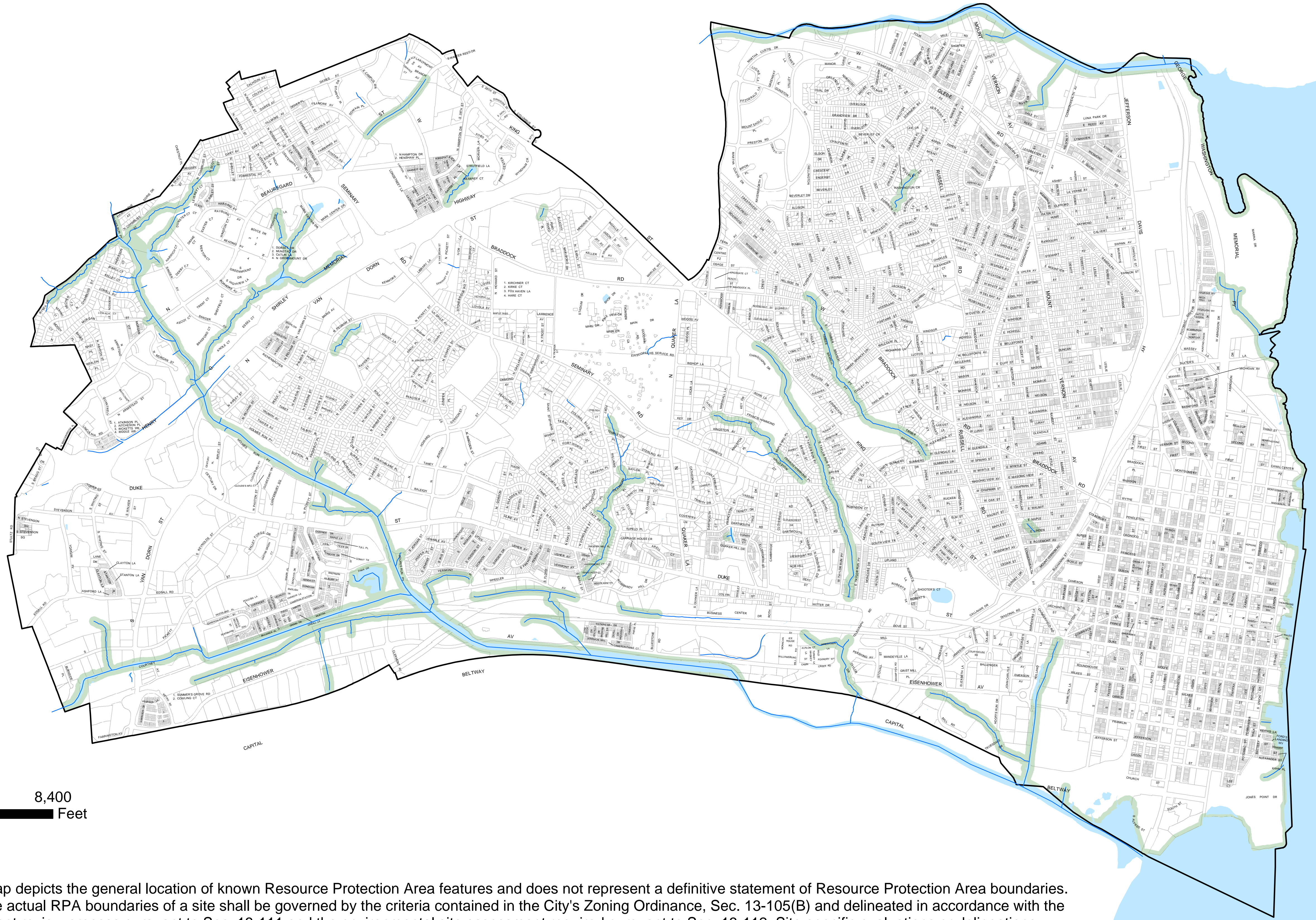


RPA Buffer Map - Adopted by City Council June 12, 2004

-  Parcels
-  Water Features
-  <all other values>
-  Perennial Stream Buffer (RPA)



*Note - This map depicts the general location of known Resource Protection Area features and does not represent a definitive statement of Resource Protection Area boundaries. In all cases the actual RPA boundaries of a site shall be governed by the criteria contained in the City's Zoning Ordinance, Sec. 13-105(B) and delineated in accordance with the development review process pursuant to Sec. 13-111 and the environmental site assessment required pursuant to Sec. 13-112. Site-specific evaluations or delineations must be performed by a professional engineer, land surveyor, landscape architect, soil scientist, or wetland delineator certified or licensed to practice in the Commonwealth of Virginia.